

WRAP

(Workshop to Raise
Awareness of Prevent)

Part 1

WRAP

Aims:

Intended learning outcomes:

Gain an understanding of PREVENT to protect and support vulnerable individuals from radicalisation

Identify the changes in the roles and responsibilities

Introduction

WRAP is a Workshop to Raise Awareness of Prevent through Channel to a counter terrorist activity known as CONTEST.

Key Terms:

Contest / Prevent / Channel

CONTEST aims to reduce the risk we face from terrorism so that people can go about their lives freely and with confidence.

This is made up of the four Ps = Protect / Prepare / Pursue / and Prevent

Prevent:

Prevent is the Government's strategy to stop people becoming involved in violent extremism or supporting terrorism, in all its forms. Prevent works within the non-criminal space, using early engagement to encourage individuals and communities to challenge violent extremist ideologies and their behaviours.

Channel:

Channel is an early intervention multi-agency process designed to safeguard vulnerable people from being drawn into violent extremist or terrorist behaviour.

Channel works in a similar way to existing safeguarding partnerships aimed at protecting vulnerable people.



Counter-Terrorism & Security Act 2015

- The Counter Terrorism and Security Act 2015 has introduced the Prevent Duty for various bodies including all FE colleges, adult education providers and independent learning providers to carry out PREVENT duties.
- The Prevent Duty has "due regard to the need to prevent people from being drawn into terrorism" Anti Terrorism and Security Act 2015 : Schedule 3, Section 21

Counter-Terrorism & Security Act 2015

Prevent duties include:

- Establishing a single point of contact for Prevent
- Assess risks of learners, vulnerable adults being drawn into terrorism
- Develop and action plan to reduce risk
- Train staff (and learners) to recognise radicalisation and extremism
- Refer vulnerable people to the Channel process
- Prohibit extremism speakers and events that promote radical ideology

Contest

Counter-terrorism methods

Counter-terrorism refers to the practice, techniques, and strategies that governments, military, police and business organisations use to combat or prevent terrorism.

- The UK uses a strategy named CONTEST that aims to reduce the risk to the UK and its interests overseas from terrorist attack.

CONTEST has four areas of work:

- **Prevent** – aims to stop people becoming terrorist or supporting terrorism. **This is about taking action before any criminal activity has taken place**
- **Pursue** – aims to disrupt and stop terrorists attacks, wherever possible by prosecuting those who have engaged in terrorist related activity
- **Protect** – aims to strengthen our protection against a terrorist attack in the UK or interest overseas and reduce our vulnerability
- **Prepare** – aims to mitigate the impact of a terrorist attack where that attack cannot be stopped

Government Counter Terrorism Strategy

CONTEST (4 P's)

PROTECT



Strengthen our protection against a terrorist attack

PREPARE



Mitigate the impact of a terrorist attack

PURSUE



Stop terrorist attacks

PREVENT: aims to stop people becoming terrorist or supporting terrorism.

This is about taking action before any criminal activity has taken place

Counter-Terrorism & Security Act

We all have:

“due regard to the need to prevent people from being drawn into terrorism”

This is done through a multi-agency approach through:

LOCAL AUTHORITIES

POLICE

COMMUNITY AND VOLUNTARY SERVICES

EDUCATION

PRISON SERVICE

YOUNG OFFENDING TEAMS

EMERGENCY SERVICES

UK BORDER AGENCY

HEALTH

SOCIAL SERVICES

ADULT AND CHILDREN SERVICES

PROBATION SERVICES

What is the current threat level?

- **Critical** – an attack is expected imminently
- **Severe** – an attack is highly likely
- **Substantial** – an attack is a strong possibility
- **Moderate** – an attack is possible, but not likely
- **Low** – an attack is unlikely

SEVERE

Terrorist Organisations

Al Ghurabaa
Al Shabaab
Boko Haram
 Hamas
 Hizballah
 Irish Republican
 Army
 ISIS / ISIL

Basque Homeland
& Liberty (ETA)
Haqqani Network
(HQN)
Lashkar e Tayyaba
(LT)
Tamil Tigers

Individual case studies

Anders Breivik

John Smith

Nicky Reilly

Younes Tsouli

Pavlo Lapshyn

Richard Reid

Liam Lyburd

Aqsa Mahmood

David Copeland

Timothy McVeigh

Robert Cottage

Michael Adebolajo

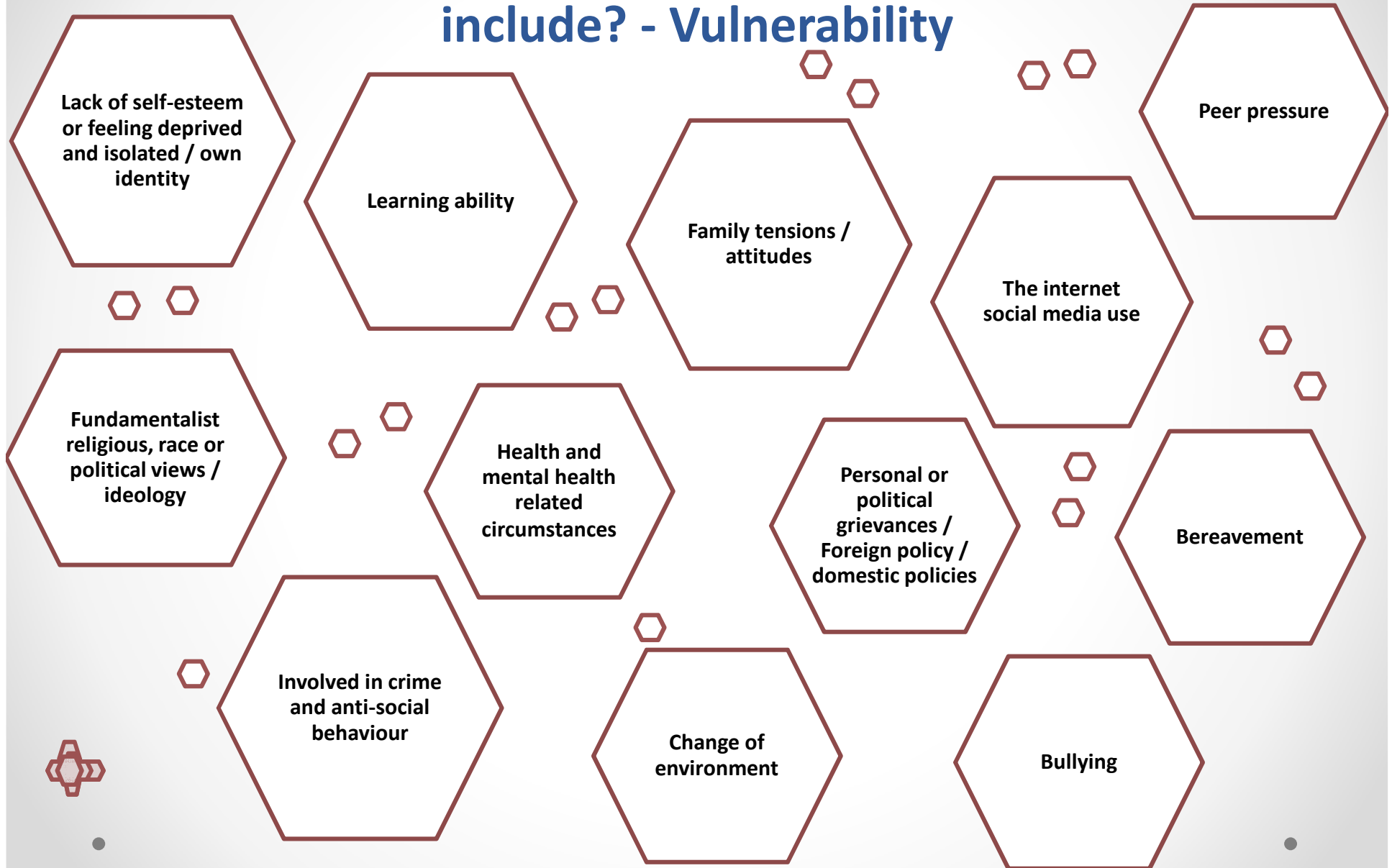
Hammaad Munshi

Neil Lewington

Mohammed Emwazi

Mark Colborne

There are many factors that make people vulnerable to being drawn to terrorism: They include? - Vulnerability



Contest Prevent and Channel

- **Gain an understanding of Contest Prevent and Channel**
- **Identify the changes in the roles and responsibilities of tutors**

Contest

UK Government Strategy

*“To reduce the risk to the UK,
and its interests overseas,
from terrorism
so that people can
go about their lives
freely and with confidence”*

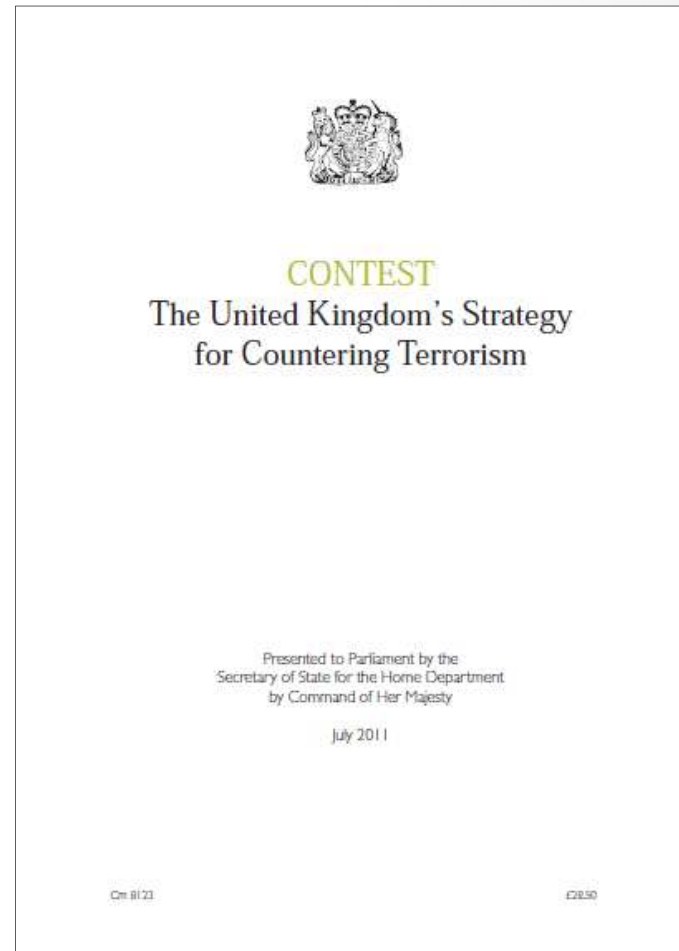
CONTEST aims to reduce the risk we face from terrorism so that people can go about their lives freely and with confidence.

This is made up of the four Ps = Protect / Prepare / Pursue / and Prevent

CONTEST / PREVENT

CONTEST has four areas of work:

- **Prevent** – aims to stop people becoming terrorist or supporting terrorism
- **Pursue** – aims to disrupt and stop terrorists attacks, wherever possible by prosecuting those who have engaged in terrorist related activity
- **Protect** – aims to strengthen our protection against a terrorist attack in the UK or interest overseas and reduce our vulnerability
- **Prepare** – aims to mitigate the impact of a terrorist attack where that attack cannot be stopped



Safeguarding & Channel

Protecting and supporting vulnerable individuals susceptible to radicalisation



Convicted Offenders

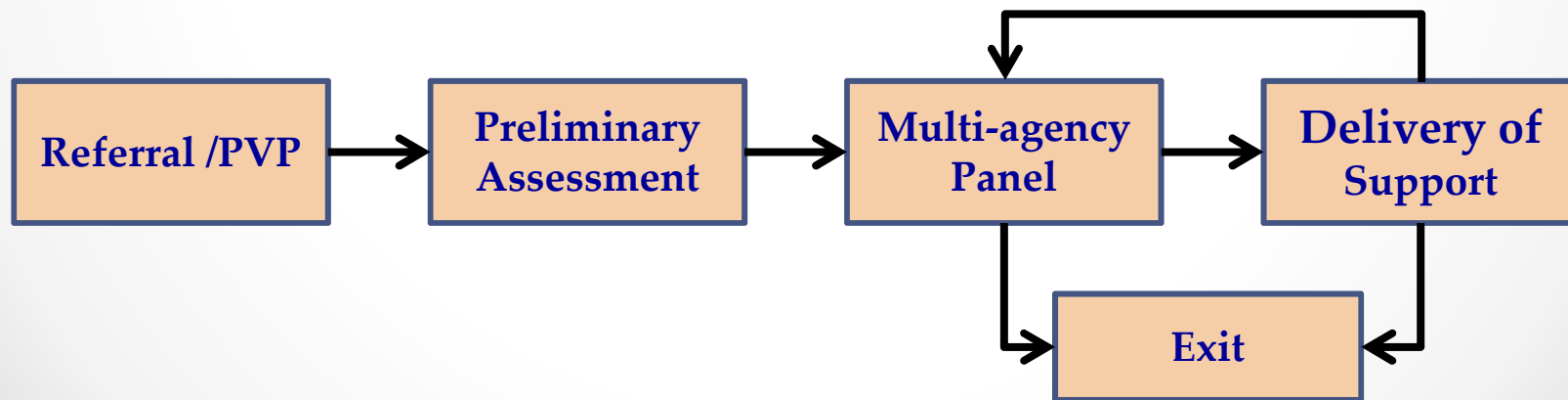


Early Intervention

CHANNEL

Channel is a multi-agency approach to protect people at risk from radicalisation.

- It uses existing collaboration between the police, statutory partners and the local community to:
 - ✓ **identify** individuals at risk of being drawn into terrorism or who are vulnerable
 - ✓ **assess** the nature and extent of that risk; and
 - ✓ develop the most appropriate **support plan** for the individuals concerned
 - ✓ operates in **pre-criminal space** (before and act)



Counter-Terrorism & Security Act

We all have:

“due regard to the need to prevent people from being drawn into terrorism”

This is done through a multi-agency approach through:

LOCAL AUTHORITIES

POLICE

COMMUNITY AND VOLUNTARY SERVICES

EDUCATION

PRISON SERVICE

YOUNG OFFENDING TEAMS

EMERGENCY SERVICES

UK BORDER AGENCY

HEALTH

SOCIAL SERVICES

ADULT AND CHILDREN SERVICES

• PROBATION SERVICES •

Referrals

Referring people who may be suspect –
Your role as a tutor could help:

Activity: Watch Video: Referrals:

From: Govt Wrap 1V referrals: England and Wales

**Make observational notes report back to
group for discussion**

Referrals

Referring people who may be suspect –
Your role as a tutor could help:

Who can make a referral?

Anyone can make a referral.

Referrals come from a wide range of partners including:

- Education – you as a tutor can make a referral
- Health
- Youth Offending Teams
- Police
- Social Services

What happens with the referral?

Referrals are first screened for suitability through a preliminary assessment by the Channel Coordinator and the local authority.

If suitable, the case is then discussed at a Channel panel of relevant partners to decide if support is necessary.

Interventions

Referring people who may be suspect –
What can you do?

Raising Concerns

Raising a concern or interventions

If you believe that someone is vulnerable to being exploited or of being radicalised, use the college safeguarding or duty of care procedures this will start the Pre-Prevent Procedures and allow concerns to the appropriate leads be raised to Channel Officers if appropriate.

What can you do? Interventions

By Kelly Simcock (Tim Parry Johnathan Ball Foundation for Peace) and Manwar Ali – Jamas

Watch Video:

From: **Govt Wrap 1V - Interventions**



Contact Details

Channel/Prevent Team

DS Maxine Monks Channel Co-ordinator

Office 01772 413029

Mobile 07943050822

CO 12091 Yasmin Zaffar- Channel Officer

Office 01772 412914

Mobile 07949 726039

CEO Lindsay Frew (South-West Lancs)

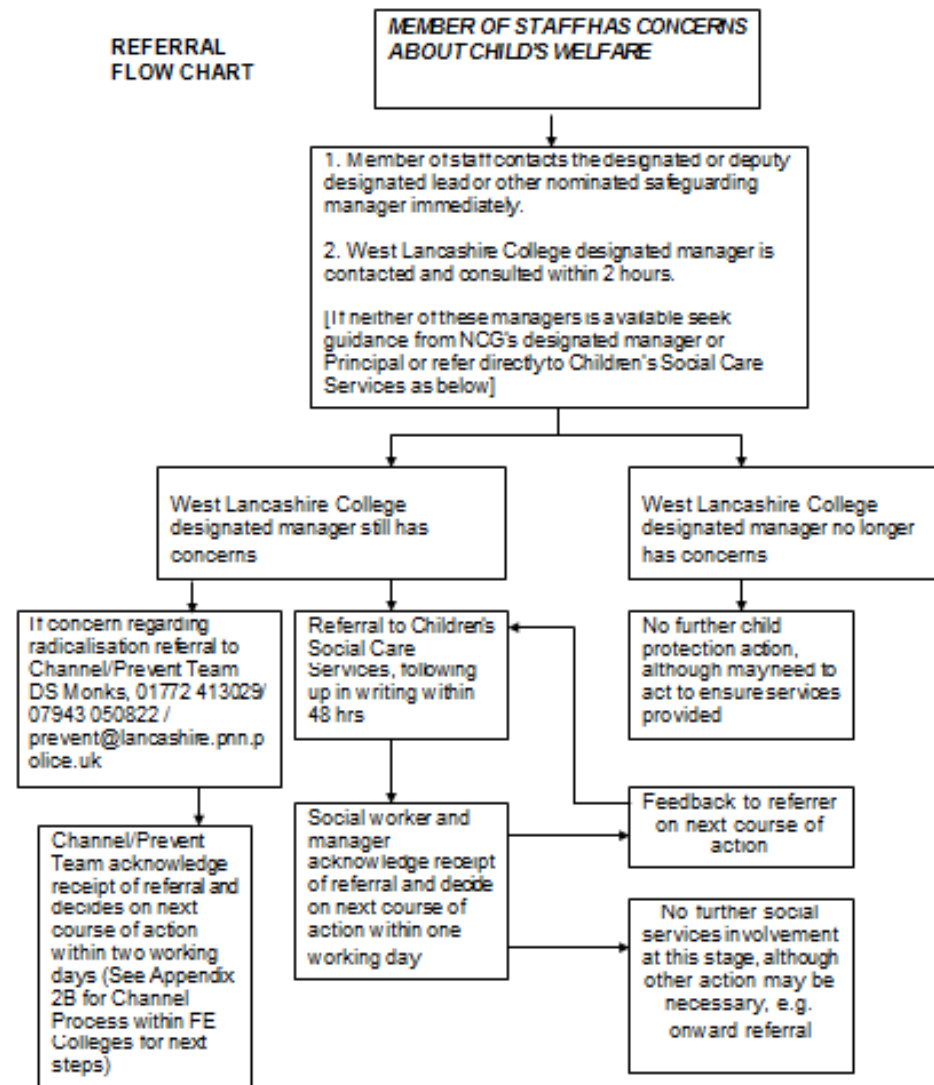
01772 209733 / 07957 463 593

Channel-referrals@lancashire.pnn.police.uk

[http://course.ncalt.com/Channel General Awareness](http://course.ncalt.com/Channel_General_Awareness)

WLC Safeguarding - Pre-Prevent Procedures

(Action Planning)



WLC Contact Details

(Action Planning referral team)

Child Protection Procedures - List of Useful Names and Contact Details

Newcastle College Group – Internal Contacts

Name	Title	Organisation	Tel. Number
NCG DESIGNATED MANAGER			
Lynne Griffin	Group Director Human Resources & organisation Development	NCG	0191 200 4000
DIVISIONAL DESIGNATED SAFEGUARDING LEAD			
Sheila Minchin	Director of Quality & Support	West Lancashire College	01695 52361
DEPUTY DIVISIONAL DESIGNATED SAFEGUARDING LEAD			
Jane Hines	Head of Marketing & Student Services	West Lancashire College	01695 52316
NOMINATED SAFEGUARDING MANAGERS			
Michelle Brookes	Learner Zone Manager	West Lancashire College	01695 52383
Sue Lewin	Nursery Manager	West Lancashire College	01695 52559
Daniel Gorman	Head of Health Care, Education and Foundation Learning	West Lancashire College	01695 52382
Jane Kasper	Interim Programme Area Manager	West Lancashire College	01695 52492
Mike Cooney	Tutor	West Lancashire College	01695 52394
Galina Jordanova Bhebe	Learning Support Assistant	West Lancashire College	01695 52488
Jeff Hilton	Tutor	West Lancashire College	01695 52572
HUMAN RESOURCES			

Other useful contact details – external



Name	Title	Organisation	Tel. Number
ADULT SOCIAL CARE SERVICES (Office Hours)			
	Duty Team	Lancashire County Council	0300 123 6721
INITIAL RESPONSE SERVICE (Out of Office Hours)			
	Duty Team	Lancashire County Council	0300 123 6721
POLICE PUBLIC PROTECTION UNIT (located at local police station) (PPU)			
	Skelmersdale Police Station	Lancashire Constabulary	01695 466335 0845 125 3545 (out of hours)
LOCAL AUTHORITY DESIGNATED OFFICER (LADO)			
	Tim Booth	Lancashire County Council	01772 536694
REFERRAL TO CHANNEL PREVENT TEAM			
	DS Monks	Lancashire Constabulary	01772 413029 / 07943 050822 prevent@lancashire.pnn.police.uk

Other Useful Contact Details - External

WLC Safeguarding - Referral Form

Comes under Child Protection
Procedure and Vulnerable
Adults

Used to assess vulnerable
learners

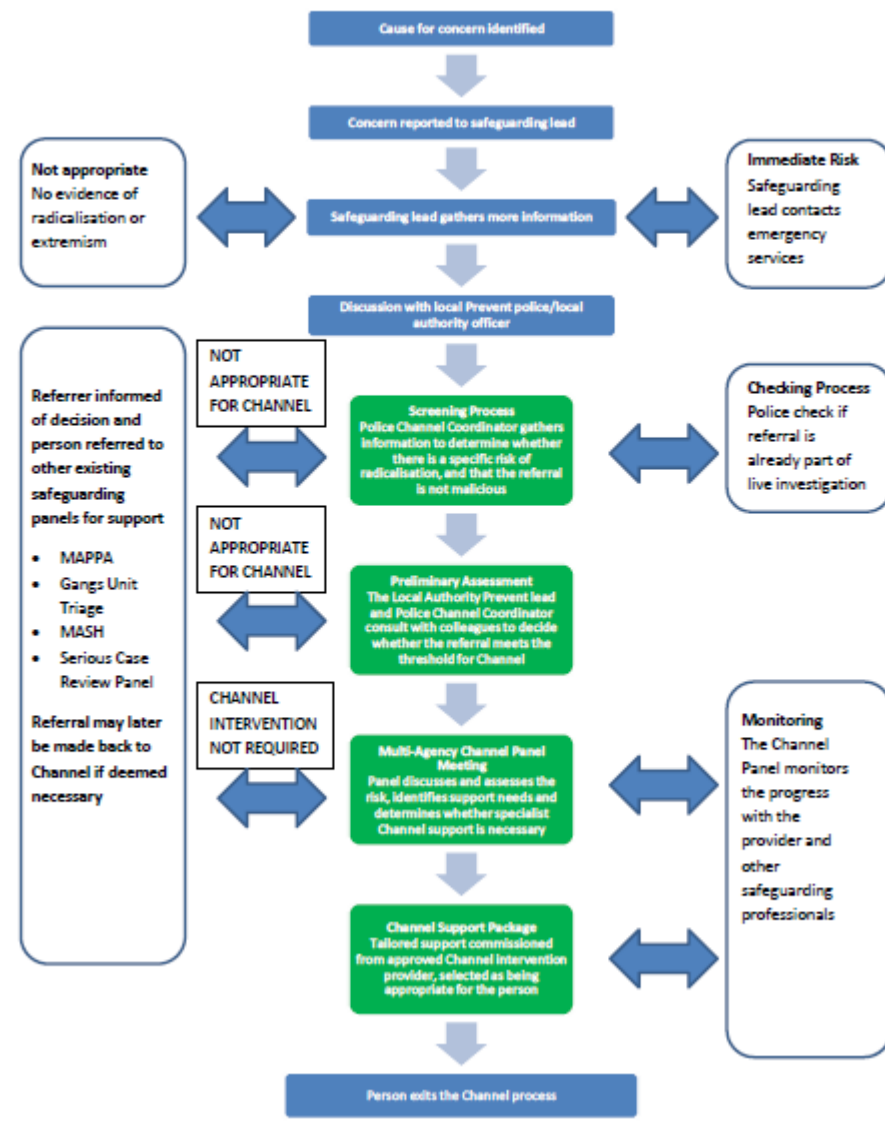
WLC Safeguarding Referral Form

Name of Complainant	
Name of Adult who has allegedly been abused	
Date of alleged incident	
Time of alleged incident	
Location of alleged incident	
Account of alleged incident	
Description of any injuries observed	
Reporting Staff Name	
Reporting Staff Signature	
Date	
Action/Outcome to referrer	

Channel Process within FE Colleges

<http://www.preventforfeandtraining.org.uk/sites/default/files/The%20Prevent%20Strategy%20and%20the%20Channel%20Programme%20in%20FE%20Colleges.pdf>

The Channel Process within FE Colleges



Prevent Duty Risk Assessment / Action Plan
 Your Institution will have to develop an action plan
 see <http://www.preventforfeandtraining.org.uk/>

Prevent Duty Risk Assessment/Action Plan
with example of possible content

<u>No</u>	<u>Prevent Vulnerability/Risk Area</u>	<u>Risk Y/N</u>	<u>Action taken/already in place to mitigate/address risk</u>	<u>Owner</u>	<u>When</u>	<u>RAG</u>
1	LEADERSHIP Do the following people have an good understanding of their own and institutional responsibilities in relation to the "Prevent Duty"? <ul style="list-style-type: none"> > Board of Governors > SMT > Staff > Student Union > Safeguarding team 					
2	Partnership 1) Is there active engagement from the institution's Governors, SMT, managers and leaders? 2) Does the institution have an identified single point of contact (SPOC) in relation to Prevent? 3) Does the institution engage with the BIS Regional Prevent Coordinator, Local Authority Police Prevent Leads and engage with local Prevent Boards/Steering Groups at Strategic and Operational level?	Y	1) <u>Governors & SMT provided with briefing by BIS HE/FE Prevent Coordinator on 1/2/15. Arrangements in place to repeat this briefing at SMT Development Day or sooner as necessary.</u> 2) <u>The Prevent Lead for ***** is the Safeguarding Lead ***** He/she is responsible for oversight of the Prevent Action Plan & update to SMT.</u> 3) <u>The institution, thro' the Prevent Lead, meets regularly with the BIS Prevent Lead</u>			

Summary

Prevent duties include:

- Establishing a single point of contact for Prevent
- Assess risks of learners, vulnerable adults being drawn into terrorism – **create and use referral forms**
- Develop and action plan to reduce risk – **create a Prevent Duty Risk Assessment for your institution**
- Train staff (and learners) to recognise radicalisation and extremism
- Refer vulnerable people to the Channel process if necessary – contact **Channel Co-ordinator**
- Prohibit extremism speakers and events that promote radical ideology